

## Standard Preparation 1600 mm Vegetables Processing/ Washing Table with Upstand

ITEM # \_\_\_\_\_  
 MODEL # \_\_\_\_\_  
 NAME # \_\_\_\_\_  
 SIS # \_\_\_\_\_  
 AIA # \_\_\_\_\_



132766 (TLV1600PN)

Vegetables Processing  
Table with 2 polythene  
cutting boards, knife holder,  
2 perforated Top covers and  
upstand, 1600mm

### Short Form Specification

Item No. \_\_\_\_\_

50mm high worktop in 304 AISI stainless steel, 2 bowls (684x303x180h mm). Integral radiused rear upstand, h=100mm. Square section legs 40x40mm on 1" height-adjustable feet in 304 AISI stainless steel.

N.I polythene cutting board and scraping hole on front.

### Main Features

- Sturdiness, stability and reliability of table accurately tested.

### Construction

- Table can be equipped with a mobile bin with lid for waste disposal (optional accessory).
- 50 mm worktop in 304 AISI stainless steel, 10/10 in thickness with upturned edges and reinforced waterproof underpanel, incorporates a layer of sound deadening materials.
- Square section legs and 40 mm height-adjustable feet in 304 AISI stainless steel.
- Table can be equipped with a set of castors as an alternative to the feet.
- 100 mm upstand with 10 mm radiused corner and 13 mm deep, designed to be used against a wall.
- Upstand back completely covered with Stainless Steel welded profile.

### Optional Accessories

- Lower shelf for 1600mm tables PNC 855147 ☐  
and sinks
- Set of 4 wheels (2 with brake) PNC 855150 ☐  
d. 100mm for tables and sinks  
(total height on wheels= 993 mm)
- 3-sided underframe for PNC 855154 ☐  
1600mm tables
- Single plastic drain syphon 1,5 PNC 855306 ☐  
" for work tables with bowl
- Elbow operated mixer tap with PNC 855322 ☐  
spout 3/4", single hole
- Elbow operated mixer tap with PNC 855323 ☐  
short spout 3/4", single hole
- Foot operated mixer tap (hot PNC 855328 ☐  
and cold) with spout 3/4"

APPROVAL: \_\_\_\_\_

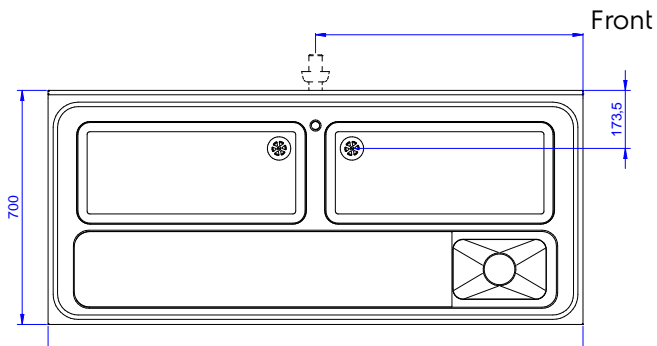


**Electrolux**  
PROFESSIONAL

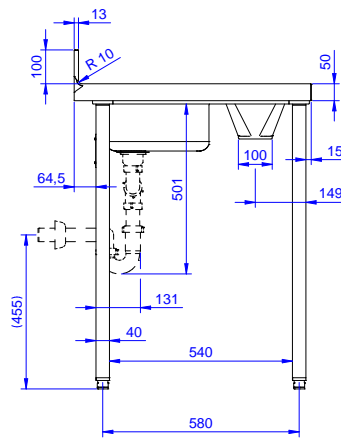
## Standard Preparation 1600 mm Vegetables Processing/ Washing Table with Upstand

### Key Information:

Number of cutting boards	
132766 (TLV1600PN)	2
Cutting board dimensions - width	430 mm
Cutting board dimensions - depth	640 mm
Cutting board dimensions - height	25 mm
External dimensions, Width:	1600 mm
External dimensions, Depth:	700 mm
External dimensions, Height:	1000 mm
Upstand Dimensions, Height:	100 mm
Upstand Dimensions, Depth:	13 mm
Upstand Dimensions, Radius:	R=10
Worktop thickness:	50 mm
Net weight:	60 kg

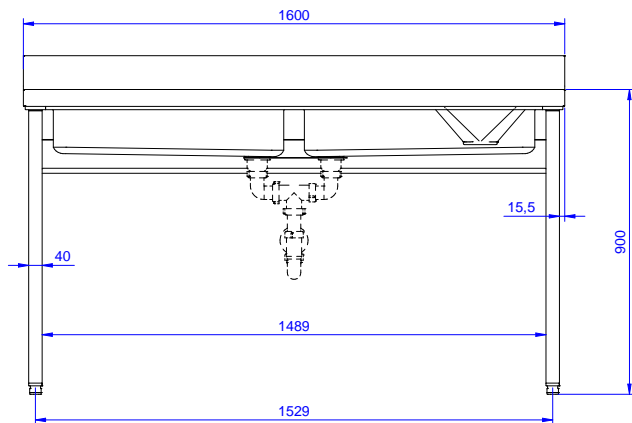


Side



D = Drain

Top



Standard Preparation  
1600 mm Vegetables Processing/Washing Table with Upstand

The company reserves the right to make modifications to the products without prior notice. All information correct at time of printing.

2025.05.14